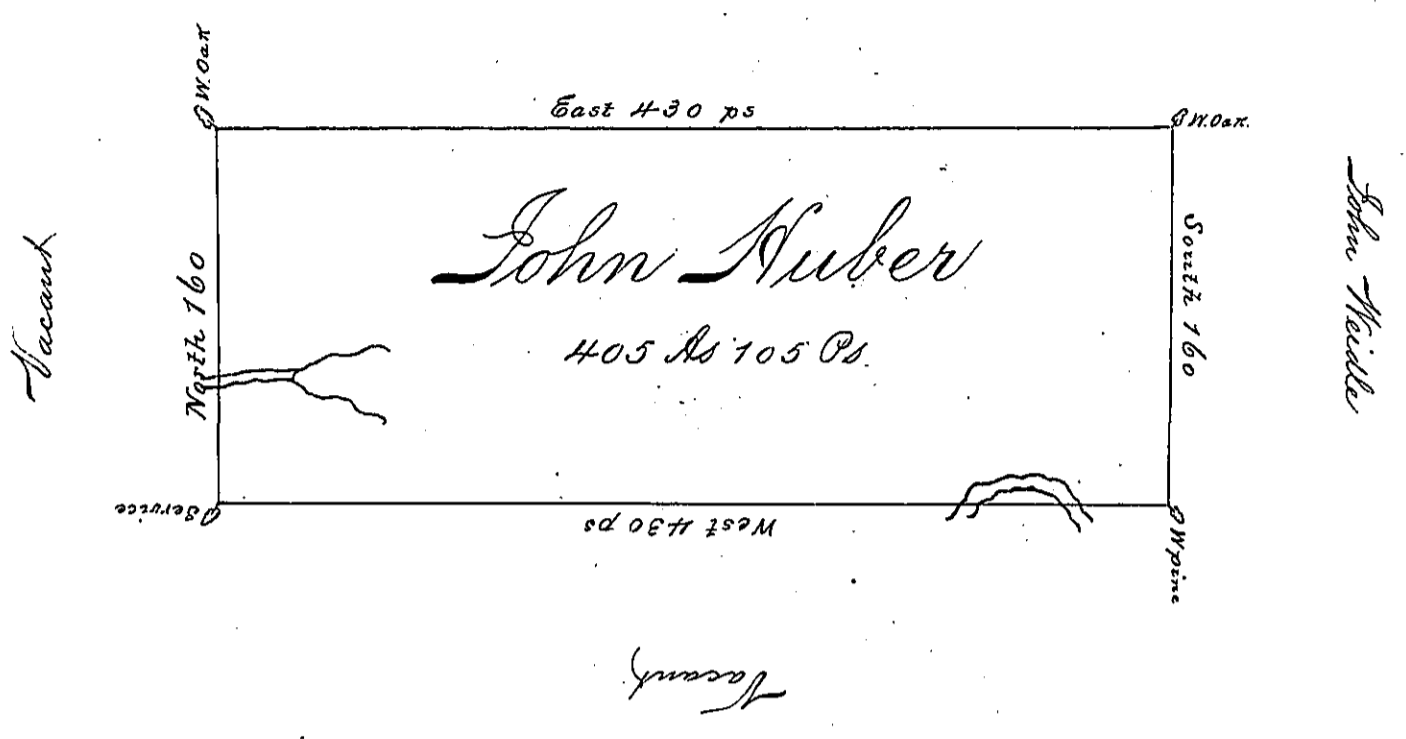


John Eberman Jun^r



Situated on the Waters of Trolick Creek
 in Wheatfield Township Westmoreland
 County. Containing 405 Acres 105 perches
 & allowance of Six per Cent for Roads &c
 Surveyed the 25th Day of Nov^r 1794 for
 John Nuber on Warrant Dated the 3^d
 Day of May 1793

James Ross D.S.

Daniel Brodhead Esq^r S. G.

IN TESTIMONY that the above is a copy of the original remaining on file in the
 Department of Internal Affairs of Pennsylvania, made con-
 formably to an Act of Assembly approved the 16th day of
 February, 1833, I have hereunto set my Hand and caused
 the Seal of said Department to be affixed at Harrisburg, this

_____ day of February 1896.

James W. Latta
 Secretary of Internal Affairs.